

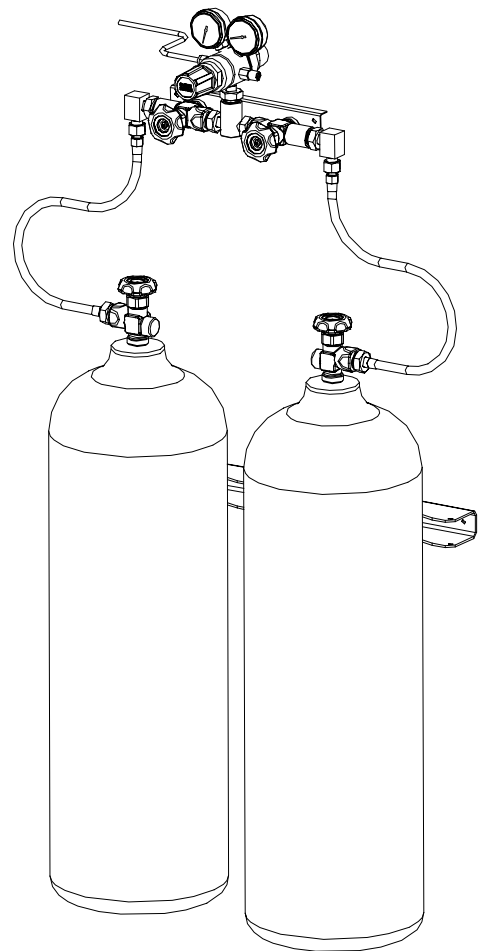
EXPANDABLE MANUAL MANIFOLD

This is range of expandable manual change-over gas manifold systems. It is specifically designed for applications where there are multiple gas cylinders of each supply bank. The modular design of the inlet header system means that supply capacity of the manifold can be easily expanded if required.

The manifold features a solid gas specific outlet block into which a range of different regulators can be fitted. On either side of the outlet block high pressure isolation valves are fitted. The isolation valves are fitted with colour coded knobs. The inlet header system incorporates non-return valves in each cylinder lead connection to prevent accidental reverse flow if an empty or partial empty cylinder is connected to the manifold.

Manifolds can be supplied with or without cylinders leads. Individual inlet pressure gauges can be fitted to both supply banks, if required. For high purity gas applications the manifold can be chrome plated, and inlet purge valves fitted. Outlet connections other than those listed in the ordering information section can be supplied on request, (eg. CGA or DIN fittings).

Manual manifolds with multiple supply cylinders are normal located outdoors in a designated gas storage area (due to extra safety requirements when storing larger volumes of compressed gases)



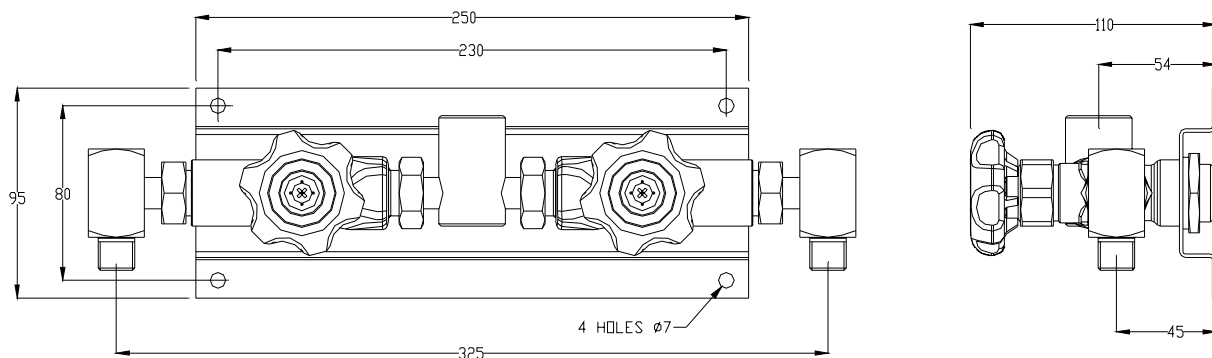
MATERIALS OF CONSTRUCTION

Outlet Block:	Brass
Isolation Valve Body:	Brass
Isolation Valve Seat:	Nickel Silver/Nylon (except for oxygen: Nickel Silver/Copper)
Isolation Valve Gland:	PTFE
Isolate Valve Knobs:	Flame Retardant Nylon
Non-Return Valves:	Brass/Stainless Steel (except for oxygen: Brass/Bronze)
Mounting Bracket:	Stainless steel

SPECIFICATIONS

Maximum Inlet Pressure:	200 Bar @ 15° C
Inlet Connection:	3/8" BSP RH for industrial non-fuel gases 3/8" BSP LH for industrial fuel gases
Outlet Connection:	refer table
Temperature Operating Range:	0-60° C
Weight:	3.0 kgs
Basic Dimensions:	350mm x 95mm x 110mm

BASIC DIMENSIONS



ORDERING INFORMATION

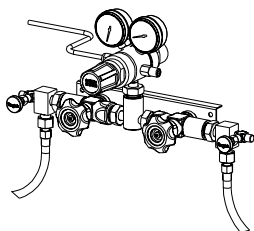
Part No	Working Gas	Outlet Fitting	Inlet Fitting	Knob Control
G360019	Acetylene	Type 20	3/8" BSP LH	Red
G360020	Carbon Dioxide	Type 30	3/8" BSP RH	Green Grey
G360103	Hydrogen	Type 20	3/8" BSP LH	Red
G360116	Inerts, Argon, Helium	Type 10	3/8" BSP RH	Blue
G360018	Oxygen	Type 10	3/8" BSP RH	Black
G360021	Oxygen (high flow)	1" BSP	3/8" BSP RH	Black

- Other gas specific models available on request.
- To include two flexible single cylinder leads with the manifold, simply add a "1x1" suffix to the above part numbers.
- To include two flexible pack leads with the manifold, add a "1Px1P" suffix to the above part numbers.
- To chrome plate the manifold, add a "CHROME" suffix to the above part numbers.
- To include purge valves to the manifold, add a "PURGE" suffix to the above part numbers.

ORDERING EXAMPLE

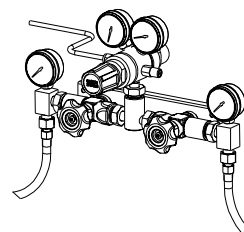
G360018 1x1 A single cylinder by single cylinder oxygen manual manifold

SPECIAL OPTIONS



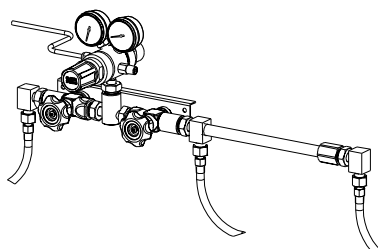
Inlet Purge Valves

Inlet connections can be modified to include valves.



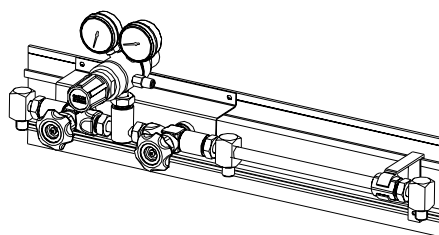
Extra Inlet Pressure Gauges

Inlet connections can be modified to include an purge extra set of cylinder contents pressure gauges. This allows the user to monitor the cylinder contents of the "reserve" cylinder bank.



Inlet Extensions

When the gas usage requires the manifold to have more than one cylinder on each bank, modular inlet extension are used to give the manifold greater storage capacity.



BOC Extruded Rail System

A special extended mounting bracket can be supplied on request that allows the manifold to be use with the BOC extruded rail inlet and cylinder bracket mounting system.